



Ports and LNG Terminals

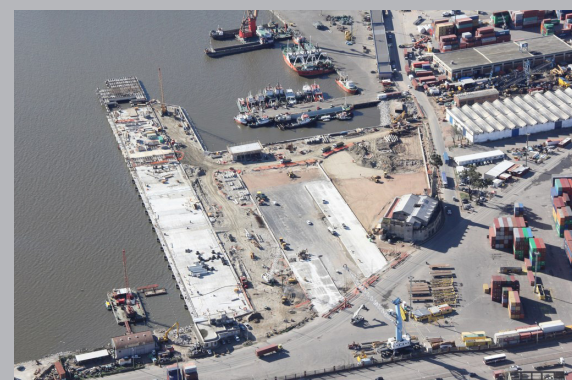
We deliver geotechnical, geospatial, geophysical and geological engineering solutions for a wide range of offshore and nearshore industries, including: wind; oil and gas; marine energy; ports; and subsea cables. We work on projects at all stages, from feasibility studies through to decommissioning, offering innovative, cost-effective solutions to clients all over the world.

Ports and LNG Terminals demand specialist skill sets in onshore, inter-tidal and offshore geoscience. The projects are often complex, involving conventional piled foundations but also land reclamation and dredging activities, corresponding to very significant CAPEX investment and sensitive structures. We bring our competence to this sector to enhance ground risk understanding and optimise construction solutions. Our work on the Port of Montevideo was award winning.

We have demonstrated experience with very difficult geotechnical conditions including calcarenite and carbonate sands, thick layers of peat and permafrost soils. Our services range from the earliest stages with feasibility studies, management and supervision of surveys, FEED and detailed engineering phases, supervision of the foundation installation and testing.

Key issues typically faced are:

- Management and supervision of geotechnical and geophysical surveys
- Consolidation analyses of soft sediments following fill placement
- Design of landfill comprising blocky clay
- Site preparation: soil replacement and reinforcement
- Soil compaction

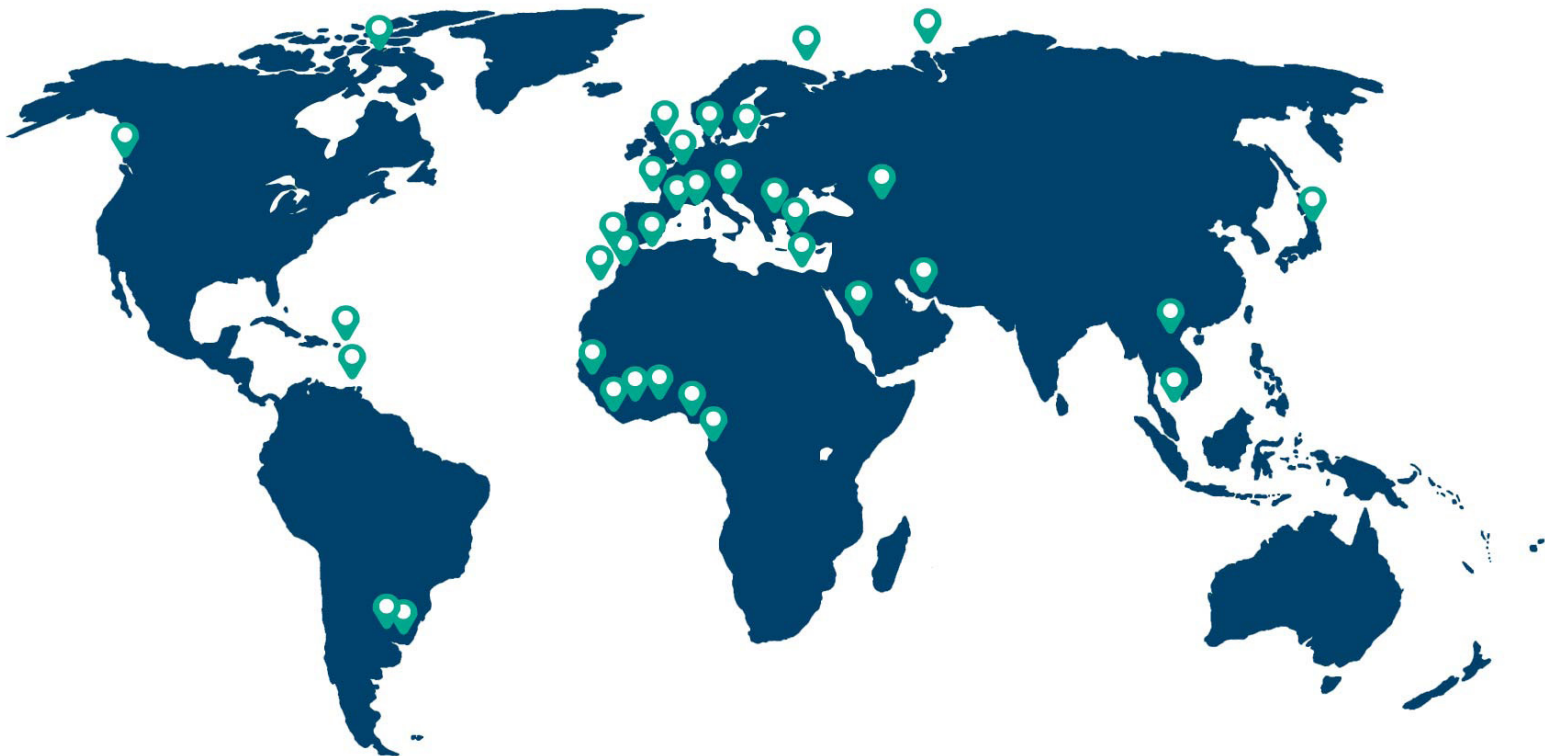




CATHIE

- Seismic induced liquefaction
- Sand static liquefaction
- Plants, structures and cranes foundation design
- Pile static & dynamic, axial & lateral testing
- Complex site investigation supervision in shallow waters or on land
- Geotechnical instrumentation of fill
- Slope stability
- Design in permafrost
- Rock dumping: general feasibility, settlement, stability of sides
- Gravity based caisson design
- Dredging: determination of minimum depth, stability of slope/sides
- Land reclamation on very soft marine sediments
- Development of a soil and infrastructure 3D model on a geo-referenced GIS system

Our Track Record :



Projects and Clients :

Port Atlantique de La Rochelle, Grand Port Maritime du Havre, Port de Sète, Port de Conakry, Porto di Ancona, La Brea Yard, Nador West Med Port, Yemen LNG, Yamal LNG, Port of Montevideo, Pars LNG, Persian LNG, Ras Laffan, Port de Brest, Port de Calais, Angola LNG, Yarimca container terminal, Dunkirk LNG Terminal, Socar and Turcas Project, Port de Sidi Boudeniane, Cap Lopez Port, Arzew LNG Terminal, Porto Nuevo Port, Peru LNG, Nord Stream AG, Gazprom